

SSC CHSL

Combined Higher Secondary Level (10+2)

2023 (TIER I)

Coverage of All 36 Sets Held From
9 to 21 March 2023



3600 TCS MCQs

36 Solved Papers

COVERING OF ALL SUBJECTS

General Intelligence • General Awareness
Quantitative Aptitude • English Language

with
100% Detailed
Explanations/
Solutions



SSC CHSL

Combined Higher Secondary Level (10+2)

2023 (TIER I)

Coverage of All 36 Sets Held
From 9 to 21 March 2023

3600 TCS MCQs

36 Solved Papers

SSC CHSL

Combined Higher Secondary Level (10+2)

2023 (TIER I)

Coverage of All 36 Sets Held
From 9 to 21 March 2023

3600 TCS MCQs

36 Solved Papers

COVERING OF ALL SUBJECTS

General Intelligence • General Awareness
Quantitative Aptitude • English Language

Vaishali Jaiswal, Varun Bali
Ajab Singh, Shivani Dogra



arihant
SUCCESS AND NOTHING LESS



ARIHANT PUBLICATIONS (INDIA) LIMITED

All Rights Reserved

© Publisher

No part of this publication may be re-produced, stored in a retrieval system or by any means, electronic, mechanical, photocopying, recording, scanning, web or otherwise without the written permission of the publisher. Arihant has obtained all the information in this book from the sources believed to be reliable and true. However, Arihant or its editors or authors or illustrators don't take any responsibility for the absolute accuracy of any information published and the damage or loss suffered thereupon.

All disputes subject to Meerut (UP) jurisdiction only.

Administrative & Production Offices

Regd. Office

'Ramchhaya' 4577/15, Agarwal Road, Darya Ganj, New Delhi -110002
Tele: 011- 47630600, 43518550

Head Office

Kalindi, TP Nagar, Meerut (UP) - 250002
Tel: 0121-7156203, 7156204

Sales & Support Offices

Agra, Ahmedabad, Bengaluru, Bareilly, Chennai, Delhi, Guwahati,
Hyderabad, Jaipur, Jhansi, Kolkata, Lucknow, Nagpur & Pune.

PRICE ₹425.00

PO No : TXT-XX-XXXXXXX-X-XX

PRODUCTION TEAM

<i>Publishing Manager</i>	Mahendra Singh Rawat	<i>Inner Designer</i>	Salman Shaikh
<i>Project Head</i>	Shahid Saifi	<i>Page Layouting</i>	Ravindra Kumar, Anil Saini, Sonu Kumar
<i>Cover Designer</i>	Mazhar Chaudhary	<i>Proof Readers</i>	Sagar Sharma, Sudeep Giri, Tripti Gupta, Nitin Sharma

Published by Arihant Publications (India) Ltd.

For further information about the books published by Arihant, log on to
www.arihantbooks.com or e-mail at info@arihantbooks.com

Follow us on    

Contents

1. SSC CHSL TIER-I 2022 (09-03-2023, 1st Shift)	1-13
2. SSC CHSL TIER-I 2022 (09-03-2023, 2nd Shift)	14-26
3. SSC CHSL TIER-I 2022 (09-03-2023, 3rd Shift)	27-39
4. SSC CHSL TIER-I 2022 (09-03-2023, 4th Shift)	40-52
5. SSC CHSL TIER-I 2022 (10-03-2023, 1st Shift)	53-65
6. SSC CHSL TIER-I 2022 (10-03-2023, 2nd Shift)	66-78
7. SSC CHSL TIER-I 2022 (10-03-2023, 3rd Shift)	79-91
8. SSC CHSL TIER-I 2022 (10-03-2023, 4th Shift)	92-104
9. SSC CHSL TIER-I 2022 (13-03-2023, 1st Shift)	105-117
10. SSC CHSL TIER-I 2022 (13-03-2023, 2nd Shift)	118-130
11. SSC CHSL TIER-I 2022 (13-03-2023, 3rd Shift)	131-142
12. SSC CHSL TIER-I 2022 (13-03-2023, 4th Shift)	143-155
13. SSC CHSL TIER-I 2022 (14-03-2023, 1st Shift)	156-168
14. SSC CHSL TIER-I 2022 (14-03-2023, 2nd Shift)	169-182
15. SSC CHSL TIER-I 2022 (14-03-2023, 3rd Shift)	183-195
16. SSC CHSL TIER-I 2022 (14-03-2023, 4th Shift)	196-208
17. SSC CHSL TIER-I 2022 (15-03-2023, 1st Shift)	209-221
18. SSC CHSL TIER-I 2022 (15-03-2023, 2nd Shift)	222-234
19. SSC CHSL TIER-I 2022 (15-03-2023, 3rd Shift)	235-247
20. SSC CHSL TIER-I 2022 (15-03-2023, 4th Shift)	248-260
21. SSC CHSL TIER-I 2022 (16-03-2023, 1st Shift)	261-273
22. SSC CHSL TIER-I 2022 (16-03-2023, 2nd Shift)	274-286
23. SSC CHSL TIER-I 2022 (16-03-2023, 3rd Shift)	287-299
24. SSC CHSL TIER-I 2022 (16-03-2023, 4th Shift)	300-312
25. SSC CHSL TIER-I 2022 (17-03-2023, 1st Shift)	313-325

26. SSC CHSL TIER-I 2022 (17-03-2023, 2nd Shift)	326-338
27. SSC CHSL TIER-I 2022 (17-03-2023, 3rd Shift)	339-351
28. SSC CHSL TIER-I 2022 (17-03-2023, 4th Shift)	352-364
29. SSC CHSL TIER-I 2022 (20-03-2023, 1st Shift)	365-377
30. SSC CHSL TIER-I 2022 (20-03-2023, 2nd Shift)	378-390
31. SSC CHSL TIER-I 2022 (20-03-2023, 3rd Shift)	391-403
32. SSC CHSL TIER-I 2022 (20-03-2023, 4th Shift)	404-415
33. SSC CHSL TIER-I 2022 (21-03-2023, 1st Shift)	416-428
34. SSC CHSL TIER-I 2022 (21-03-2023, 2nd Shift)	429-441
35. SSC CHSL TIER-I 2022 (21-03-2023, 3rd Shift)	442-454
36. SSC CHSL TIER-I 2022 (21-03-2023, 4th Shift)	455-468

SSC CHSL (TIER I)

Exam Pattern and Strategy

1

Know About Exam Pattern

In order to crack any exam, you must know the pattern and syllabus of the exam. You must go through the SSC CHSL previous year papers to analyze the complete syllabus, pattern and to know the weightage of each topic.

SSC CHSL Tier I exam includes four subjects each consisting 25 questions for 50 Marks. Time duration available to solve the complete paper is 1 hour.

SSC CHSL tier I exam pattern is shown below

Section	Subjects	No. of Ques.	Max Marks	Exam Duration
1.	General Intelligence	25	50	60 Min
2.	General Awareness	25	50	
3.	Quantitative Aptitude	25	50	
4.	English Language	25	50	
	Total	100	200	

2

Make a Study Plan

In order to get success in SSC CHSL exam, you need to make a proper study plan which should be based on latest syllabus as well as pattern. Plan to go through each and every topic of the SSC CHSL syllabus but make sure that you don't waste time in reading futile preparation material.

3

Time Management

Time management is a key to success in any exam. You may come across many students who have been preparing for many exams for a long time but they are unable to achieve positive results. One of the reasons can be the lack of proper time management. You should allot time subject as well as topic wise and implement it pin-pointedly.

4

Command on Your Basics

While starting your preparation, don't look for shortcuts, instead try to know the basics of all subjects and grab the knowledge in depth. Once you have command over these topics, you can switch to shortcuts or tricks for quick calculations.

5

Take Online Mock Test Series

To get an idea about the online exam, mock tests are the best. They will help you boost your speed. This applies to both categories of aspirants who have just started their preparation and also those who have been preparing since long time. Speed and accuracy are the key points that all competitive exams seek for. Allot your last 20 to 25 days to take as many mock tests as you can.



6

Prepare Study Notes

While preparing for the exam, preparing study notes is very important. Good notes will help the candidates to develop understanding and also identifying the important content and topics. Making study notes increases the chances of success.

Some benefits of making study notes are given below

- It improves your focus and attention.
- It promotes active learning.
- It helps in comprehension and retention of the topic.
- It improves your organisational skills.

7

Revision

Revision is an essential part of exam preparation. It helps you understand the key points of a subject and also test your memory. It is almost hard to memorise everything after one reading. Candidates should develop the habit of revising the study materials to review essential facts. It will help in preparation during study hours. The review enhances accuracy and speed, resulting in improved results.

8

Priorization of the Topics

This is the one leading cause that sets your performance apart from others. e.g. there are at least one or two topics that don't bother an aspirant at all. Judging providently, concentrate more on the topics you are not so good at or which bag your attention the most. The rest of the story ends up with consistency in solving maximum questions, revising the topics and repeating the practice with Daily Quizzes, Mock Tests, Online Test Series and Practice Sets.

9

Refer Only one Source for Study

Many of you think that if you follow more than one book or study material, then you can cover the topics in depth. This is all myth. If you use more than one book, you are more likely to get confused. So you should refer only one source for study. It makes your chances high to clear SSC CHSL Exam.

10

Trust Yourself

Never give up hope or feel defeated and trust yourself. Always be determined that you have to crack SSC CHSL this time. This will make you stay motivated as well as energized and you will definitely crack SSC CHSL exam by practicing all above ideas in your study routine.

SSC CHSL (TIER I)

Syllabus

English Language

Spot the Error, Fill in the Blanks, Synonyms/ Homonyms, Antonyms, Spellings/ Detecting mis-spelt words, Idioms & Phrases, One word substitution, Improvement of Sentences, Active/ Passive Voice of Verbs, Conversion into Direct/ Indirect narration, Shuffling of Sentence parts, Shuffling of Sentences in a passage, Cloze Passage, Comprehension Passage.

General Intelligence

It would include questions of both verbal and non-verbal type. The test will include questions on Semantic Analogy, Symbolic operations, Symbolic/ Number Analogy, Trends, Figural Analogy, Space Orientation, Semantic Classification, Venn Diagrams, Symbolic/ Number Classification, Drawing inferences, Figural Classification, Punched hole/ pattern-folding & unfolding, Semantic Series, Figural Pattern-folding and completion, Number Series, Embedded figures, Figural Series, Critical Thinking, Problem Solving, Emotional Intelligence, Word Building, Social Intelligence, Coding and de-coding, Numerical operations, Other sub-topics, if any .

Quantitative Aptitude

Number Systems: Computation of Whole Number, Decimal and Fractions, Relationship between numbers.

Fundamental arithmetical operations: Percentages, Ratio and Proportion, Square roots, Averages, Interest (Simple and Compound), Profit and Loss, Discount, Partnership Business, Mixture and Allegation, Time and distance, Time and work.

Algebra: Basic algebraic identities of School Algebra and Elementary surds (simple problems) and Graphs of Linear Equations.

Geometry: Familiarity with elementary geometric figures and facts: Triangle and its various kinds of centres, Congruence and similarity of triangles, Circle and its chords, tangents, angles subtended by chords of a circle, common tangents to two or more circles.

Mensuration: Triangle, Quadrilaterals, Regular Polygons, Circle, Right Prism, Right Circular Cone, Right Circular Cylinder, Sphere, Hemispheres, Rectangular Parallelepiped, Regular Right Pyramid with triangular or square Base.

Trigonometry: Trigonometry, Trigonometric ratios, Complementary angles, Height and distances (simple problems only) Standard Identities like $\sin^2\theta + \cos^2\theta = 1$ etc.

Statistical Charts: Use of Tables and Graphs: Histogram, Frequency polygon, Bar diagram, Pie-chart.

General Awareness

Questions are designed to test the candidate's general awareness of the environment around him and its application to society. Questions are also designed to test knowledge of current events and of such matters of everyday observation and experience in their scientific aspect as may be expected of an educated person. The test will also include questions relating to India and its neighboring countries especially pertaining to History, Culture, Geography, Economic Scene, General policy and scientific research.

SSC CHSL Tier I

SOLVED PAPER

SET 01

Exam held on

09 March, 2023 (Shift I)

Part I General English

1. Rearrange the parts of the sentence in correct order.

Climate change is

P. climate caused by natural forces in combination

Q. a broad topic that includes periodic alterations in Earth's

R. with the effects of various human activities like burning of

S. fossil fuels and changes in land cover and biodiversity

Codes

- (a) PSQR (b) QPRS
(c) RSQP (d) SRPQ

2. Find the part of the given sentence that has an error in it. If there is no error, choose 'No error'.

The recent discoveries have risen hopes about possible applications.

- (a) have risen hopes
(b) No error
(c) about possible applications
(d) The recent discoveries

3. Choose the word that means the same as the given word.

Apologetic

- (a) Contrite
(b) Solid
(c) Stagnant
(d) Derisive

4. Select the correct indirect form of the given sentence. The sage said, "Man proposes and God disposes."

- (a) The sage said that man had proposed and God had disposed.
(b) The sage said that man proposed and God disposed.

- (c) The sage said that man proposes and God dispose
(d) The sage said that man proposes and God disposes

5. Select the most appropriate meaning of the given idiom.

Slap on the wrist

- (a) A mild punishment
(b) Misunderstand each other
(c) Wild with excitement
(d) Criticise someone strongly and angrily

6. Choose the word that means the same as the given word.

Magnanimity

- (a) Virulence
(b) Volatile
(c) Invidiousness
(d) Altruism

7. Improve the underlined part of the sentence. Choose 'No improvement' as the answer if the sentence is grammatically correct.

A man may die, nations may rise and fall, but an idea lived on.

- (a) lives on
(b) lives in
(c) live on
(d) No improvement

8. Identify the segment in the sentence which contains a grammatical error. If there is no error, then select the option 'No error'.

And it just recently awarded a million-dollar contract that reeks of corruption.

- (a) a million-dollar contract
(b) that reeks of corruption.
(c) No error
(d) And it just recently awarded

9. Choose the option that is the correct passive form of the sentence.

Ravi gave you the information?

- (a) You have been given the information?
(b) Was the information given to you by Ravi?
(c) Have the information been given to you?
(d) Has the information given to you?

10. In the following question, out of the given four alternatives, select the alternative which best expresses the meaning of the idiom/phrase.

Body and soul

- (a) Life and death
(b) To solve a difficulty
(c) Wholly and entirely
(d) Happiness and sorrow

11. Choose the sentence with no spelling error.

- (a) You remind me of someone I knew onse.
(b) You reminde me of someone I knew once.
(c) You remind me of someone I knew once.
(d) You remiend me of someone I knew once.

12. Fill in the blank with an appropriate option.

My feet don't the ground for the rest of the day.

- (a) slab (b) touch
(c) deal (d) purify

13. Choose the word that can substitute the given group of words.

Study of heavenly bodies

- (a) Numerology
(b) Astrology
(c) Stargazing
(d) Astronomy

14. Select the most appropriate option to fill in the blank.
However, even after independence in 1947, British expatriate firms did not suddenly from India.

(a) divest (b) consecrate
(c) close (d) disallow

15. Choose the incorrectly spelt word.

(a) Shuot (b) Broom
(c) Bloom (d) Gloomy

16. Select the most appropriate 'one word' for the expression given below.

One who has persistent neurotic impulse to steal.

(a) Iconoclast
(b) Kleptomaniac
(c) Hypocrite
(d) Connoisseur

17. Choose the word that is opposite in meaning to the given word.

Frustrate

(a) Foster (b) Fetter
(c) Circumvent (d) Irk

18. Rearrange the parts of the sentence in correct order.

P. versions of the European poor laws, charitable and
Q. in former colonies, such as Ghana, Jamaica, India and the

R. missionary activities, and the introduction of Western juvenile justice procedures

S. Philippines the basic welfare services grew out of modified

Codes

(a) PSQR (b) QPRS
(c) PRSQ (d) QSPR

19. Choose the word that can substitute the given group of words.

One who hates institution of marriage

(a) Pedantic (b) Polyglot
(c) Misogamist (d) Coquette

20. Choose the word that means the same as the given word.

Quandary

(a) Breeze
(b) Impasse
(c) Clique
(d) Clinch

Directions (Q.Nos. 21-25) *In the following passage, some of the words have been deleted. Read the passage carefully and select the correct answer for the given blank out of the four alternatives.*

Many fruits and vegetables change (1) as they ripen. For example, tomatoes, strawberries, and red bell peppers all change from green to red. Colour is just one way along with size, texture, and smell that you can tell if a fruit or vegetable is (2) to be harvested or eaten. Imagine a factory that (3) strawberries into plastic containers to be (4) to grocery stores across the country. It might be useful to have a machine that automatically (5) any green strawberries that were picked before they were ripe. Or, you might want a machine on the farm that automatically recognises strawberries by colour and only picks the red ones to begin with.

21. Select the most appropriate option to fill in blank number 1.

(a) clothes (b) shape
(c) colour (d) size

22. Select the most appropriate option to fill in blank number 2.

(a) sober (b) ready
(c) trepid (d) steady

23. Select the most appropriate option to fill in blank number 3.

(a) breaks (b) packs
(c) tapes (d) halts

24. Select the most appropriate option to fill in blank number 4.

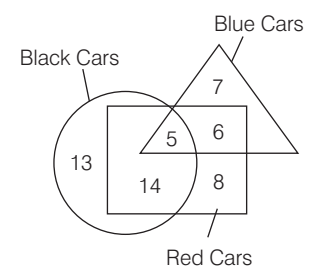
(a) shipped off
(b) suited to
(c) managed of
(d) accounted to

25. Select the most appropriate option to fill in blank number 5.

(a) sustains (b) rejects
(c) proceeds (d) detains

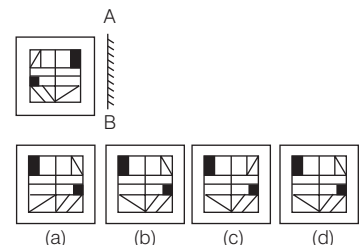
Part II General Intelligence

26. How many red cars are there?



(a) 31 (b) 22
(c) 28 (d) 33

27. If a mirror is placed on the line AB, then out of the option figures which figure will be the right image of the question figure?



28. In the following question, four number pairs are given. In each pair the number on left side of (–) is related to the number of the right side of (–) with some logic/rule/relation. Three pairs are similar on basis of same logic/rule/relation. Select the odd one out from the given alternatives.

(Note : Operations should be performed on the whole numbers, without breaking down the numbers into its constituent digits. e.g. 13-Operations on 13 such as adding/subtracting/

multiplying etc. to 13 can be performed. Breaking down 13 into 1 and 3 and then performing mathematical operations on 1 and 3 is not allowed)

- (a) 3375-13500
(b) 2125-8600
(c) 2685-10740
(d) 1595-6380

29. A series is given with one term missing. Select the correct alternative from the given ones that will complete the series.

LOG, FLH, ZII, TFJ, NCK, ?

- (a) HYL (b) HZM
(c) HZL (d) HAL

30. In the following question, select the missing number from the given series.

129, 126, 123, 120, 117, ?

- (a) 113 (b) 114
(c) 112 (d) 115

31. Words given on the left side of (::) are related with each other by some logic/rule/relation. Select the missing word/word pair on the right side of (::) from the given alternatives based on the same logic/rule/relation.

Design : Architect :: ?

- (a) Editor : Newspaper
(b) Book : Poem
(c) Shoes : Poet
(d) Furniture : Carpenter

32. If $96 \text{ C } 3 = 32$ and $288 \text{ C } 8 = 36$, then $408 \text{ C } 6 = ?$

- (a) 62 (b) 60
(c) 68 (d) 64

33. Arrange the given words in the sequence in which they occur in the dictionary.

1. Wage 2. Waist
3. Waste 4. West
5. Wave

- (a) 12354 (b) 42135
(c) 35241 (d) 24351

34. Select the option figure in which the given figure is embedded. (Rotation is not allowed).



(a)



(b)



(c)



(d)

35. In the following question, four number pairs are given. In each pair the number on left side of (-) is related to the number of the right side of (-) with some logic/rule/relation. Three pairs are similar on basis of same logic/rule/relation. Select the odd one out from the given alternatives.

(Note : Operations should be performed on the whole numbers, without breaking down the numbers into its constituent digits. e.g.

13-Operations on 13 such as adding/subtracting/multiplying etc. to 13 can be performed. Breaking down 13 into 1 and 3 and then performing mathematical operations on 1 and 3 is not allowed)

- (a) 3333-6666
(b) 4444-8888
(c) 2222-4444
(d) 5555-7777

36. In a certain code language, 'TEFLOANS' is coded as '2056121226138', 'SERGEANT' is coded as '1951872226137'. What is the code for 'UNIQUELY' in that code language?

- (a) 2114917622152
(b) 2115917623152
(c) 2124917623152
(d) 2114917632142

37. In the following question below are given some statements followed by some conclusions based on those statements. Taking the given statements to be true even if

they seem to be at variance from commonly known facts. Read all the conclusions and then decide which of the given conclusion logically follows the given statements.

Statements

All Z are D.

No Y is Z.

Conclusions

I. Some D are not Y.

II. Some Z are not Y.

III. Some D are Z.

(a) All conclusions follow

(b) Both Conclusions I and II follow

(c) Only Conclusion I follows

(d) Both Conclusions II and III follow

38. After interchanging the given two signs, what will be the value of the given equation?

\times and \div

$$47 + 13 \div 65 \times 5 - 16$$

- (a) 195 (b) 200
(c) 205 (d) 190

39. In the following question, select the odd letter/letters from the given alternatives.

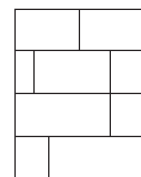
- (a) LMNO (b) IJKL
(c) ABCD (d) BDEF

40. Select the option that is related to the third number in the same way as the first number is related to the second number and fifth number is related to sixth number.

$$14 : 210 :: 13 : ? :: 16 : 272$$

- (a) 162 (b) 182
(c) 204 (d) 174

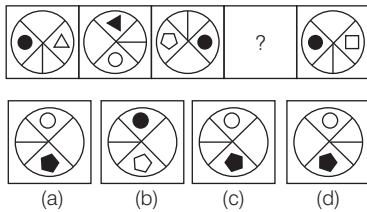
41. How many quadrilaterals are there in the given figure?



- (a) 22 (b) 25
(c) 24 (d) 23

42. S is the sister of T. R is the brother of S. U is the wife of W. T is the father of U. How is T related to W?
 (a) Father-in-law
 (b) Son
 (c) Father
 (d) Maternal Uncle

43. Select the figure from the given options that can replace the question mark (?) in the following series.

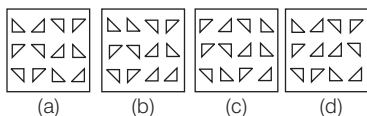
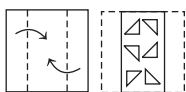


44. Words given on the left side of (::) are related with each other by some logic/rule/relation. Select the missing word/word pair on the right side of (::) from the given alternatives based on the same logic/rule/relation.

Tea : Cup :: ?

- (a) Paper : Pulp
 (b) Food : Plate
 (c) Milk : Drink
 (d) Glass : Water
45. Out of the given words, three are similar in a certain manner. However, one option is not like the other three. Select the option which is different from the rest.
 (a) Banana (b) Apple
 (c) Grape (d) Cauliflower

46. A piece of paper is folded and punched as shown below in the question figures. From the given answer figures, indicate how it will appear when opened?



47. In a certain code language, 'GIRL' is coded as 'QWNL'. What is the code for 'KEPT' in that code language?
 (a) YVJP (b) YUKR
 (c) YUJP (d) YUKP

48. Words given on the left side of (::) are related with each other by some logic/rule/relation. Select the missing word/word pair on the right side of (::) from the given alternatives based on the same logic/rule/relation.

Pen : Author :: Axe : ?

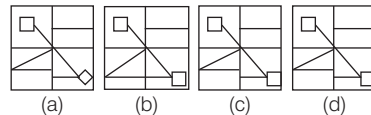
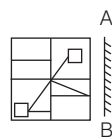
- (a) Teacher (b) Woodcutter
 (c) Cobbler (d) Chef

49. Select the option in which the numbers shares the same relationship in set as that shared by the numbers in the given set. (Note : Operations should be performed on the whole numbers, without breaking down the numbers into its constituent digits. e.g. 13- Operations on 13 such as adding/subtracting/multiplying etc. to 13 can be performed. Breaking down 13 into 1 and 3 and then performing mathematical operations on 1 and 3 is not allowed)

(79, 89, 101)

- (31, 41, 47)
 (a) (43, 47, 59)
 (b) (53, 61, 67)
 (c) (29, 37, 43)
 (d) (17, 19, 23)

50. If a mirror is placed on the line AB, then out of the option figures which figure will be the right image of the question figure?



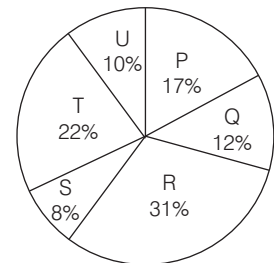
Part III Quantitative Aptitude

51. If $a + b + c = 0$, then what is the value of $a^3 + b^3 + c^3 - 3abc$?
 (a) -1 (b) 1 (c) 0 (d) 2

52. The radius of a wheel is 14 cm. How much distance will be travelled by the wheel in 10 revolutions?
 (a) 910 cm (b) 880 cm
 (c) 800 cm (d) 820 cm

53. If $\sec \theta + \tan \theta = 5$, then what is the value of $\sec \theta - \tan \theta$?
 (a) $1/5$ (b) $1/3$
 (c) $1/6$ (d) $1/2$

54. The pie-chart given below shows the number of girls in six schools P, Q, R, S, T and U. The total number of girls in all these six schools are 3000. Number of girls in a particular school is shown as a percentage of total number of girls in all these six schools.



What is the total number of girls in school P and R?

- (a) 1440 (b) 870
 (c) 1620 (d) 930

55. Angle subtended by a chord XY on the centre of a circle is 180 degree. If length of this chord is 36 cm, then what will be the radius of this circle?
 (a) 24 cm (b) 18 cm
 (c) 27 cm (d) 21 cm

56. What is the value of $\left(\frac{1 + \sec^2 A}{1 + \cos^2 A} \right) \left(\frac{1 + \sin^2 A}{1 + \operatorname{cosec}^2 A} \right)$?
 (a) $\cos^2 A$ (b) $\operatorname{cosec}^2 A$
 (c) $\sec^2 A$ (d) $\tan^2 A$